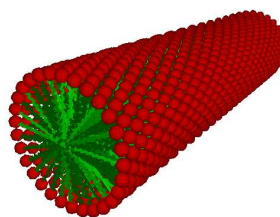
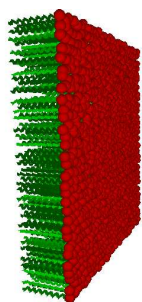


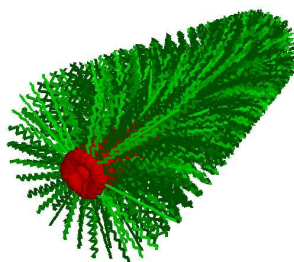
(a) Spherical micelle



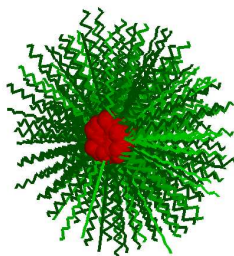
(b) Wormlike micelle



(c) Lamella

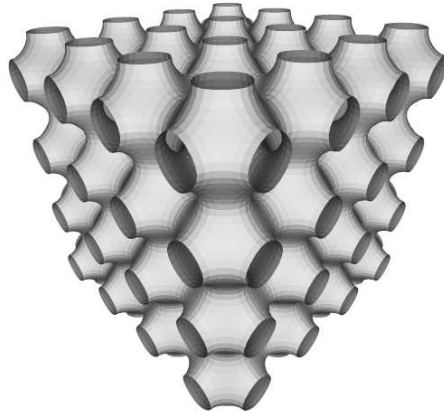


(d) Inverse wormlike micelle

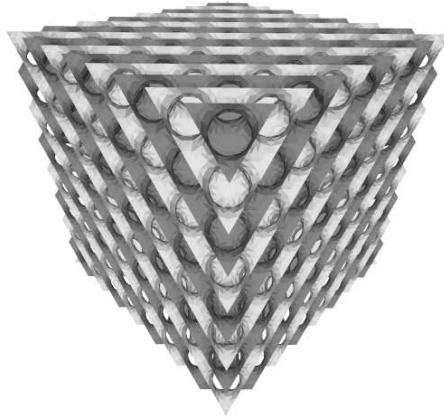


(e) Inverse spherical micelle

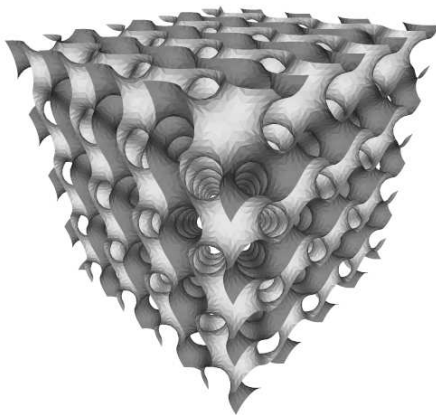
Figure 1: Simple surfactant morphologies.



(a) The P , or “Plumber’s Nightmare” Surface



(b) The D , or “Diamond” surface, so called because each labyrinth has the same structure as the carbon atoms in a diamond crystal.



(c) The G , or “Gyroid” surface

Figure 2: Three common cubic triply periodic minimal surfaces.